

Gaining height

Pick one document and analyze a micro architectural project

1. Draw sketches with captions in English ✨

ANALYZE THE SPACE PROJECT USING THE FOLLOWING QUESTIONS:

- What kind of space is it?
- Technique: how is it made?
- Functionality: how does it work?
- Target: who is it for?
- Use: what is it used for? what is the context of use?

Answer the following questions after your analysis:

How does this micro architecture challenge the notion of height? Is "gaining height" a need? Argue

Find another architectural reference from the 20th/21st centuries that deals with this notion. Include it in your analysis.

2. ORAL PRESENTATION: Be convincing

Using your sketches and analysis, present your document and explain the way(s) it challenges the notion of height.

✨ PLAN DE L'ANALYSE

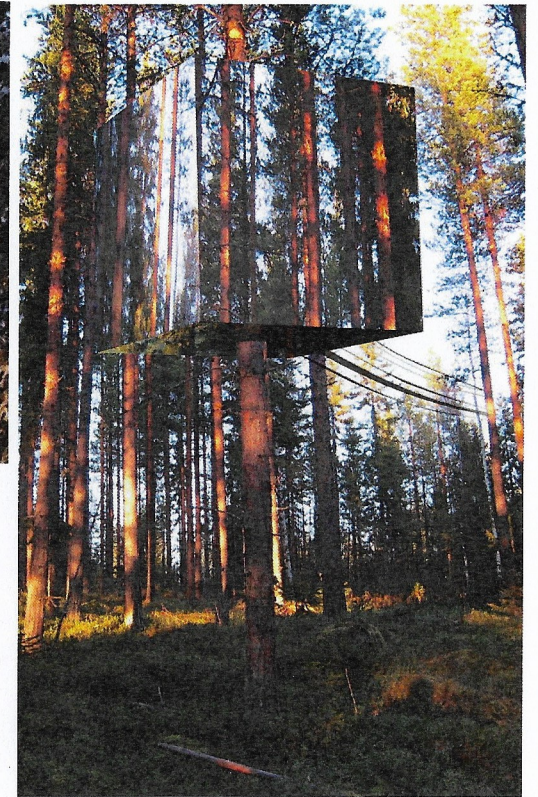
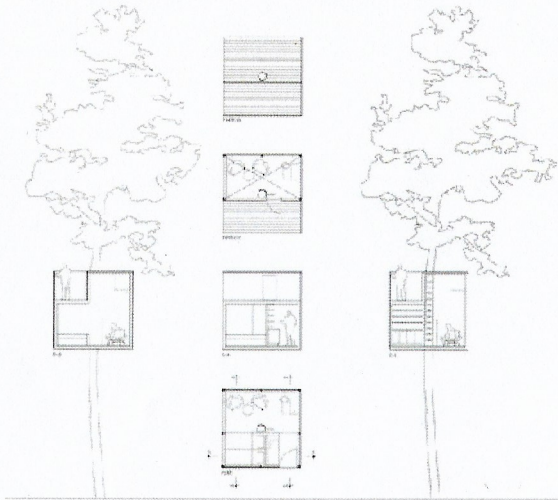
- **PART 1** > Analyser de la micro architecture de manière à répondre à la question : **How does this micro architecture challenge the notion of height?**

- **PART 2** > Traiter la question : **Is "gaining height" a need?** Justifiez vos arguments par des éléments d'analyse et une référence personnelle.

L'analyse sur planches (format et mise en page libre) doit articuler écrits et croquis analytiques. Bien structurer l'organisation générale en titres et sous-titres clairement lisibles. Valoriser / mettre en évidence visuellement les termes clés.

TREE HOUSE

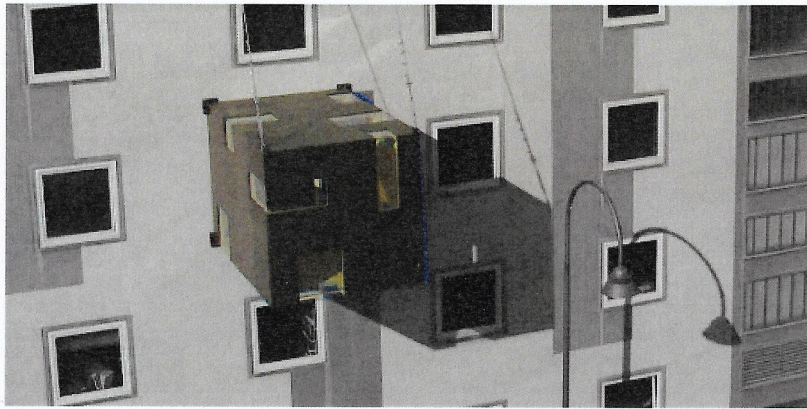
HARADS TREE HOTEL (Sweden)
Kent et Britta Lindvall



IKOS

PORTABLE OBSERVATION STATION
Gilles Ebersolt





RUCKSACK HOUSE, 2004, Leipzig (Allemagne)

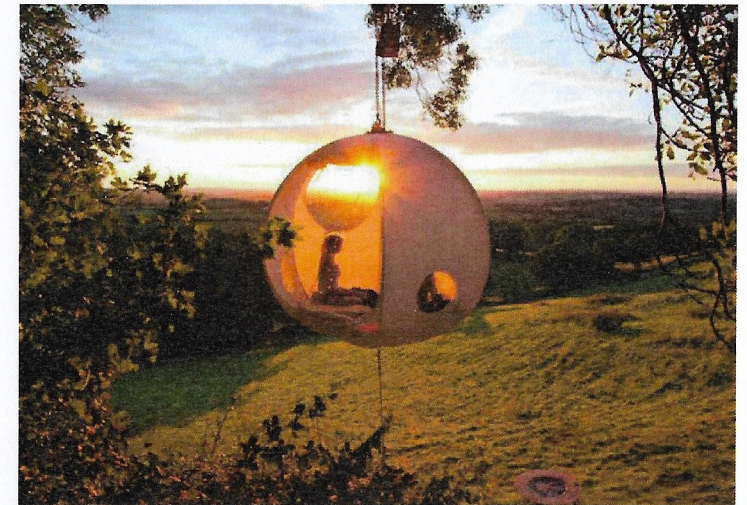
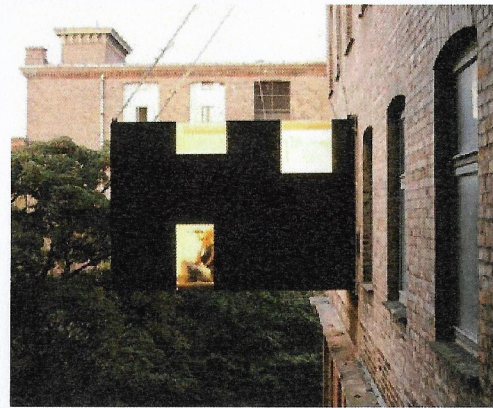
«Sculpture» portable conçu par Stefan Eberstadt (artiste) avec: Stiftung Federkiel, Leipzig; Dr. Klaus Röckerath, Cologne; Société de développement Zollverein mbH, Essen Architectes.

Cabine en acier soudé, fixée au moyen de câbles d'acier au toit ou à la façade de la maison existante.

Intérieur: placage de bois de bouleau

Extérieur: revêtement de résine synthétique hydrofuge

Zone utilisable | Surface: 9 m²



ROOMOON

Portable circular hanging tent

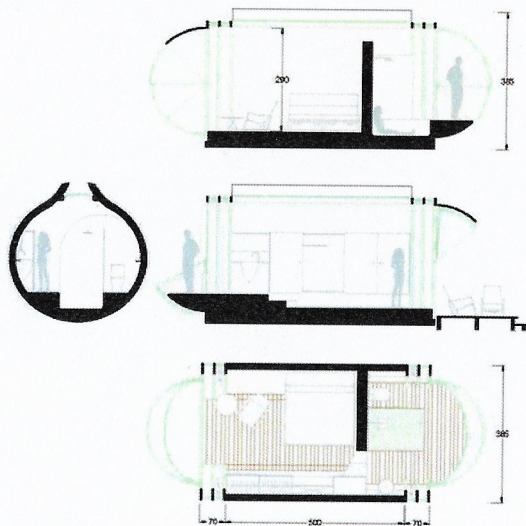
Hanging Tent company



DROP ECO-HOTEL

Removable modular hotel suit

Ricardo Bofill Taller, Arquitectura



ROTATION PNEU

Portable shelter
Dominik Bauer m'ler

